

SKF Bearing Grease

# Extreme pressure low temperature bearing grease

## LGWM 1

SKF LGWM 1 is a low consistency mineral oil based grease, using a lithium soap and containing extreme pressure additives. It is extremely suitable for the lubrication of bearings operating under both radial and axial loads.

- Good oil film formation at low temperatures down to  $-30\text{ }^{\circ}\text{C}$  ( $-20\text{ }^{\circ}\text{F}$ )
- Good pumpability down to low temperatures
- Good corrosion protection
- Good water resistance

### Typical applications

- Wind turbine main shafts
- Screw conveyors
- Centralised lubrication systems
- Spherical roller thrust bearing applications



### Available pack sizes

Packsizes	Designation
420 ml cartridge	LGWM 1/0.4
5 kg can	LGWM 1/5
18 kg pail	LGWM 1/18
50 kg drum	LGWM 1/50
180 kg drum	LGWM 1/180
Electro-mechanical lubricant dispensers	
TLMR 101 series 380 ml refill (incl. battery)	LGWM 1/MR380B
TLMR 201 series 380 ml refill	LGWM 1/MR380



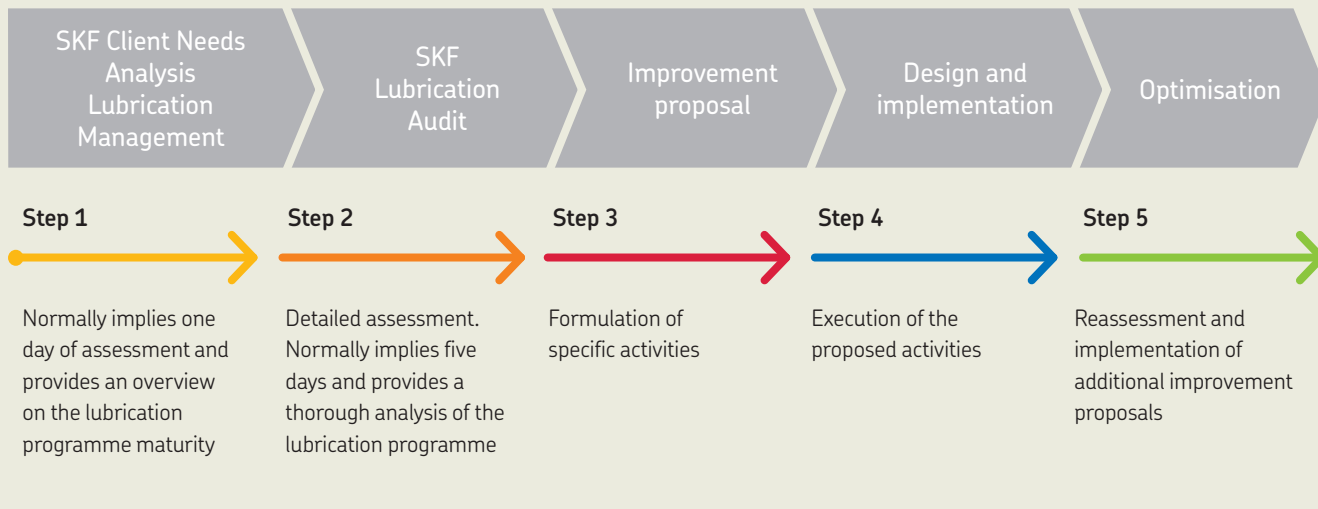
## Technical data

Designation	LGWM 1/(pack size)		
DIN 51825 code	KP1G-30	<b>Corrosion protection:</b>	
NLGI consistency class	1	Emcor: – standard ISO 11007	0–0
Thickener	Lithium	– water washout test	0–0
Colour	Brown	<b>Water resistance</b>	
Base oil type	Mineral	DIN 51 807/1,	
Operating temperature range	–30 to +110 °C (–20 to +230 °F)	3 hrs at 90 °C	1 max.
Dropping point DIN ISO 2176	>170 °C (>340 °F)	<b>Oil separation</b>	
Base oil viscosity		DIN 51 817,	
40 °C, mm <sup>2</sup> /s	200	7 days at 40 °C, static, %	8–13
100 °C, mm <sup>2</sup> /s	16	<b>Copper corrosion</b>	
Penetration DIN ISO 2137		DIN 51 811	2 max. at 90 °C (>195 °F)
60 strokes, 10 <sup>-1</sup> mm	310–340	<b>EP performance</b>	
100 000 strokes, 10 <sup>-1</sup> mm	+50 max.	Wear scar DIN 51350/5, 1 400 N, mm	1,8 max.
		4–ball test, welding load DIN 51350/4, N	3 200 min. <sup>1)</sup>
		<b>Fretting corrosion</b>	
		ASTM D4170 (mg)	5,5 <sup>1)</sup>

<sup>1)</sup> Typical value

## Lubrication management

Just as asset management takes maintenance to a higher level, a lubrication management approach allows lubrication to be seen from a wider point of view. This approach helps to effectively increase machine reliability at a lower overall cost.



[skf.com](http://skf.com) | [skf.com/lubrication](http://skf.com/lubrication) | [skf.com/mapro](http://skf.com/mapro)

© SKF is a registered trademark of the SKF Group.

© SKF Group 2021

The contents of this publication are the copyright of the publisher and may not be reproduced (even extracts) unless prior written permission is granted. Every care has been taken to ensure the accuracy of the information contained in this publication but no liability can be accepted for any loss or damage whether direct, indirect or consequential arising out of the use of the information contained herein.

PUB MP/P8 12055/3 EN · November 2021

Certain image(s) used under license from Shutterstock.com.